



## PC184T-5-4

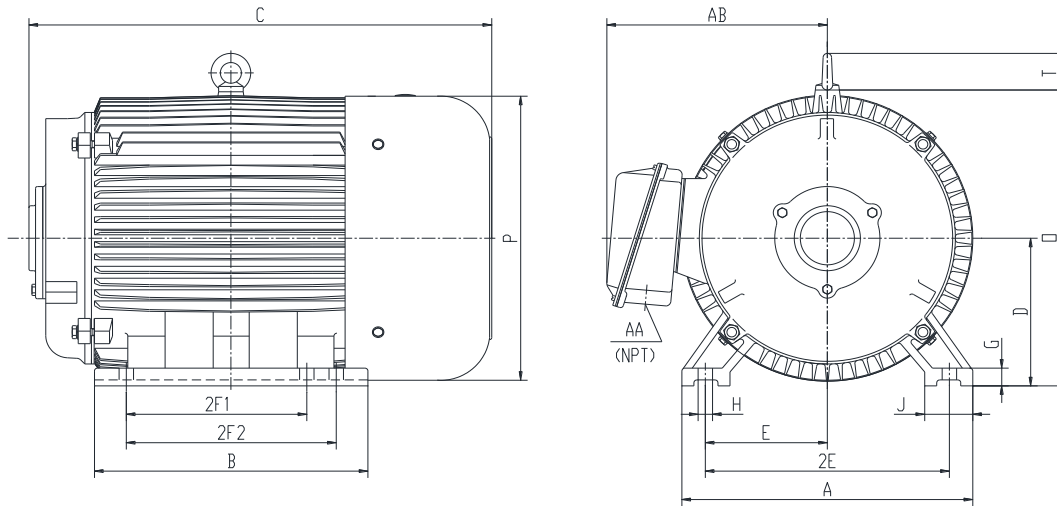
### CONVERTER

DESIGNED FOR USE WITH ROTARY PHASE CONVERTER UNITS

TOTALLY ENCLOSED FAN COOLED

SPIKE RESISTANT WIRE (2200V PEAK VOLTAGE SPIKE RATING)

Factory Certified for T2B Class I, Division II, Groups A,B,C & D and Class II, Division II, Groups F & G



### DIMENSIONS

HP	RPM	Frame	MOUNTING													
			A	B	C	D	G	H	J	E	2E	2F1	2F2	O	P	T
5	1800	184T	9.5	8.3	13.2	4.5	0.6	0.41	2	3.75	7.5	4.5	5.5	9.1	8.7	1.6

Conduit Box		Bearings		Mount
AA	AB	DE	ODE	
0.75	7.5	6306-ZZ	6306-ZZ	F1

**BEARING LUBRICATION:** The bearings come lubricated with Mobil Polyrex EM Polyurea Grease.





## PC184T-5-4

### CONVERTER

DESIGNED FOR USE WITH ROTARY PHASE CONVERTER UNITS

TOTALLY ENCLOSED FAN COOLED

SPIKE RESISTANT WIRE (2200V PEAK VOLTAGE SPIKE RATING)





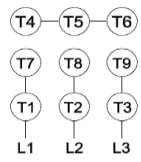
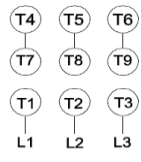
Factory Certified for T2B Class I, Division II, Groups A,B,C & D and Class II, Division II, Groups F & G

### PERFORMANCE DATA

HP	RPM	Frame	Voltage	Frequency (Hz)	Full Load S.F.	Insulation Class	NEMA Design	Slip (%)	NEMA Code	Enclosure Type	IP Rating	Max. Ambient
5	1740	184T	208-230/460	60	1.15	F	B	3.3	J	TEFC	55	40 °C

Amps (460V)		Efficiency (%)		Power Factor	Torque (ft-lb)			DE Bearing	ODE Bearing	Connection	Weight (lbs.)
FLA	LRA	NOM.	MIN.	100%	FLT	LRT %	BDT %	6306-ZZ	6306-ZZ	9 Lead 2Y/Y	90
6.7	46	85.5	82.5	0.81	14.8	260	310				

### NAME PLATE

 <b>ROTARY PHASE CONVERTER</b> INVERTER DUTY 20:1 VT; 10:1 CT      Hernando, MS 38632										CONNECTION DIAGRAMS					
CAT NO.		PC184T-5-4				FRAME		184T		WT/LBS		90			
HZ	60	S.F.	1.15	HZ	50	S.F.	1.0	ENCL	TEFC	IP	55				
HP	5	RPM	1800	HP	5	RPM	1500	DUTY	CONT	DES	B				
VOLTS		208-230/460				VOLTS		190/380		AMB	40 °C		INS	F	
AMPS		14.4-13.4/6.7				AMPS		16/8		DE BRG		6306-ZZ			
CODE	J	P.F.	0.81	CODE	H	P.F.	0.83	ODE BRG		6306-ZZ					
EFF	85.5	MIN	82.5	EFF	83.0	MIN	80.0	SER NO							
		AC INDUCTION CONVERTER													
												<b>208-230V</b> 			
												<b>460V</b> 			

### APPLICATIONS:

Specifically designed for use as the converter component for rotary phase converters.